



# ELIT FKLEM-V2A-810MM

Disconnecting clamp V2A round Ø8-10mm | flat 30-40mm

## Technical description

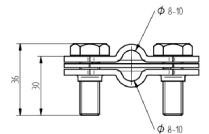
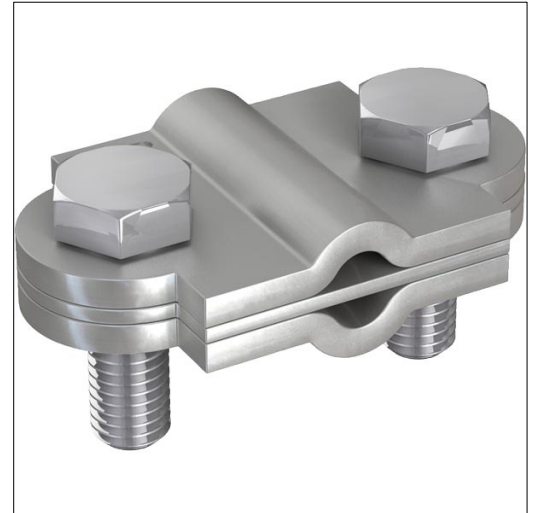
Disconnecting clamp, Vario, made of stainless steel according to EN 62561-1 for test connections Ø 8 - 10 mm or flat 30 - 40 mm.

Screw: [2x] Hexagon bolt M10, stainless steel V2A. The original Vario system is an affordable and practical solution for connecting conductors of different shapes. All parts are interchangeable.

## Advantages:

Stainless steel disconnect clamp according to EN 62561-1

For test connections round conductor Ø 8 - 10 mm or flat 30 - 40 mm



Product name/ Art.nr/ GTIN		ELIT FKLEM-V2A-810MM/ 40180018/ 7070810015849
According to:		---
Type of connector	Connection terminal	
Suitable for diameter round conductor	8 - 10 Millimetre	
Material	Stainless steel 304 (V2A)	
Surface protection	Other	
Type of fastening screws	KS screw	